

**NPTN Polyclonal Antibody**  
**Purified Rabbit Polyclonal Antibody (Pab)**  
**Catalog # AP56921****Specification****NPTN Polyclonal Antibody - Product Information**

Application	WB, IHC-P, IHC-F, IF, E
Primary Accession	<a href="#">O9Y639</a>
Reactivity	Rat, Pig, Dog, Bovine
Host	Rabbit
Clonality	Polyclonal
Calculated MW	42 KDa
Physical State	Liquid
Immunogen	KLH conjugated synthetic peptide derived from human NPTN
Epitope Specificity	51-150/298
Isotype	IgG
<b>Purity</b>	
affinity purified by Protein A	
Buffer	0.01M TBS (pH7.4) with 1% BSA, 0.02% Proclin300 and 50% Glycerol.
SUBCELLULAR LOCATION	Cell membrane; Single-pass type I membrane protein (Potential). Note=Enriched at postsynaptic density (By similarity).
SIMILARITY	Contains 3 Ig-like (immunoglobulin-like) domains.
Important Note	This product as supplied is intended for research use only, not for use in human, therapeutic or diagnostic applications.

**Background Descriptions**

This gene encodes a type I transmembrane protein belonging to the Ig superfamily. The protein is believed to be involved in cell-cell interactions or cell-substrate interactions. Alternative splicing results in multiple transcript variants. [provided by RefSeq, May 2009]

**NPTN Polyclonal Antibody - Additional Information****Gene ID** 27020**Other Names**

Neuroplastin, Stromal cell-derived receptor 1, SDR-1, NPTN, SDFR1, SDR1

**Target/Specificity**

Isoform 1 is ubiquitously expressed. Isoform 2 is expressed in brain cortex and cerebellum (at protein level).

**Dilution**WB~1:1000

=[dilution\\_IHC-P](#)>IHC-P~~N/A</span><br \><span class  
=[dilution\\_IHC-F](#)>IHC-F~~N/A</span><br \><span class  
=[dilution\\_IF](#)>IF~~1:50~200</span><br \><span class =[dilution\\_E](#)>E~~N/A</span>

### Storage

Store at -20 °C for one year. Avoid repeated freeze/thaw cycles. When reconstituted in sterile pH 7.4 0.01M PBS or diluent of antibody the antibody is stable for at least two weeks at 2-4 °C.

## NPTN Polyclonal Antibody - Protein Information

**Name** NPTN

**Synonyms** SDFR1, SDR1

### Function

Probable homophilic and heterophilic cell adhesion molecule involved in long term potentiation at hippocampal excitatory synapses through activation of p38MAPK. May also regulate neurite outgrowth by activating the FGFR1 signaling pathway. May play a role in synaptic plasticity (By similarity). Also acts as a chaperone for ATP2B1; stabilizes ATP2B1 and increases its ATPase activity (PubMed:<a href="http://www.uniprot.org/citations/30190470" target="\_blank">30190470</a>). Promotes localization of XKR8 at the cell membrane (PubMed:<a href="http://www.uniprot.org/citations/27503893" target="\_blank">27503893</a>).

### Cellular Location

Cell membrane {ECO:0000250|UniProtKB:P97546}; Single-pass type I membrane protein {ECO:0000250|UniProtKB:P97546}

### Tissue Location

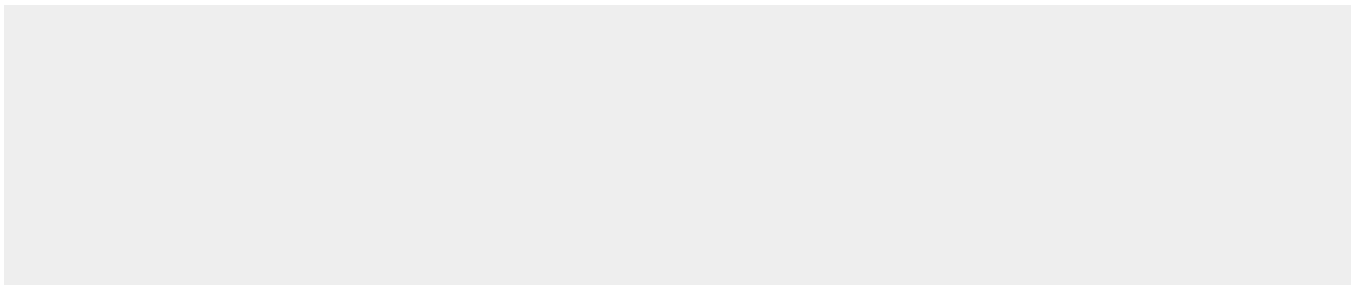
Isoform 1 is ubiquitously expressed. Isoform 2 is expressed in brain cortex and cerebellum (at protein level) {ECO:0000269|PubMed:17196182, ECO:0000269|Ref.1}

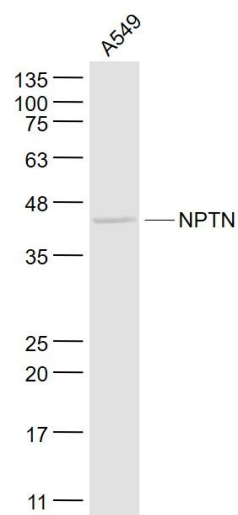
## NPTN Polyclonal Antibody - Protocols

Provided below are standard protocols that you may find useful for product applications.

- [Western Blot](#)
- [Blocking Peptides](#)
- [Dot Blot](#)
- [Immunohistochemistry](#)
- [Immunofluorescence](#)
- [Immunoprecipitation](#)
- [Flow Cytometry](#)
- [Cell Culture](#)

## NPTN Polyclonal Antibody - Images





Sample:

A549(Human) Cell Lysate at 30 ug

Primary: Anti- NPTN (bs-1801R) at 1/1000 dilution

Secondary: IRDye800CW Goat Anti-Rabbit IgG at 1/20000 dilution

Predicted band size: 42 kD

Observed band size: 42 kD